



# Flight Plan & Site Survey

Created using **RPAS Wilco®**

Operation Name:	Meridian MFA PERC Bldg
Pilot Name:	
Pilot Certificate:	
Flight Start:	December 15, 2023 1:36 PM
Flight End:	December 15, 2023 3:36 PM
Flight Address:	5413 51 Street, Stony Plain, Alberta T7Z 1B8, Canada
Flight Area (Latitude):	53° 31' 28.61" N ( 53.525 )
Flight Area (Longitude):	114° 0' 31.63" W ( -114.009 )
Altitude - Radius:	<b>Alt:</b> 500 ft - <b>Rad:</b> 926.0 m ( 0.5 nm)
Airspace:	CERT
FIR - Contact:	CZEG - 780-890-8397

Please ensure you received all required authorizations prior to flight.

## Disclaimer

This Site Survey was created using RPAS Wilco by AIM Robotics. The flight plan contained is intended only for RPAS flights on the date/time and location specified. The user accepts all responsibility for the accuracy and completeness of the information contained.

For the complete Terms & Conditions, see

<https://rpaswilco.com/#/tnc>

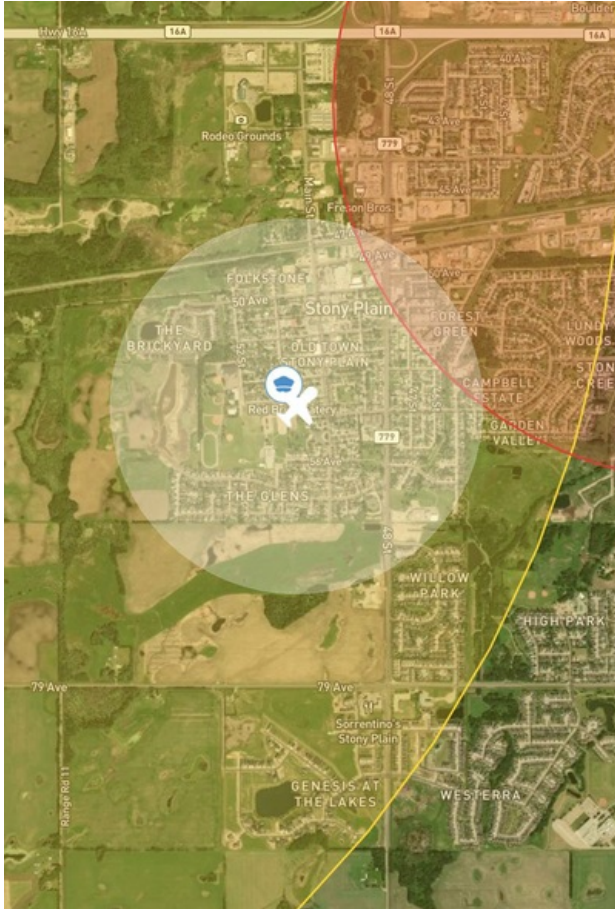
## Included

- Site Survey
- Obstacles (if available)
- Nearby Aerodromes
- Canadian Aviation Regulations
- GFA
- Aerodrome Supplements
  - METAR & TAF (if available)
  - NOTAMs
  - CFS





# Flight Plan & Site Survey

## Flight Map

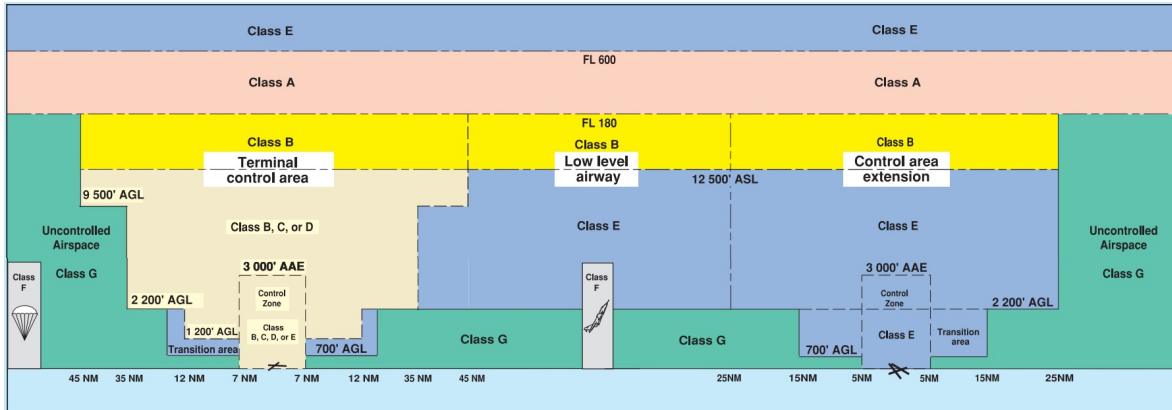


## MAP Details

	Latitude	Longitude
 <b>MODEL</b>	53° 31' 28.61" N ( 53.525 )	114° 0' 31.63" W ( -114.009 )
 <b>Pilot</b>	53° 31' 32.21" N ( 53.5256 )	114° 0' 35.23" W ( -114.0098 )



## Airspace Classification



## Overlying Airspaces

Class	Name	Floor	Ceiling
E	Edmonton, AB CAE	12500MSL	12500MSL
B	Edmonton, AB CAE	12500MSL	18000MSL
C	Edmonton, AB TCA	7000MSL	9500MSL
C	Edmonton, AB TCA	4600MSL	7000MSL
C	Edmonton, AB TCA	9500MSL	12500MSL
B	Edmonton, AB TCA	12500MSL	18000MSL

## Nearest Aerodromes & Distance from Operation

STONY PLAIN (LICHTNER FARMS) (CSP3 - AERODROME - Reg)	Lat: 53.538	Long: -114.068	4.187 KM	2.26 NM
STONY PLAIN (WESTVIEW HEALTH CENTRE) (CSP2 - HELIPORT - Cert)	Lat: 53.538	Long: -113.978	2.521 KM	1.36 NM
PARKLAND (CPL6 - AERODROME - Reg)	Lat: 53.474	Long: -113.829	13.156 KM	7.1 NM
VILLENEUVE (CZVL - AERODROME - Cert)	Lat: 53.668	Long: -113.852	19.007 KM	10.26 NM
VILLENEUVE (ROSE FIELD) (CRF3 - AERODROME - Reg)	Lat: 53.646	Long: -113.803	19.149 KM	10.34 NM

# Canadian Aviation Regulations

## Division III — General Operating and Flight Rules

For full listing please visit : <https://laws-lois.justice.gc.ca/eng/regulations/SOR-96-433/FullText.html#s-901.27>

### Visual Line-of-sight

- **901.11 (1)** Subject to subsection (2), no pilot shall operate a remotely piloted aircraft system unless the pilot or a visual observer has the aircraft in visual line-of-sight at all times during flight.
- **(2)** A pilot may operate a remotely piloted aircraft system without the pilot or a visual observer having the aircraft in visual line-of-sight if the operation is conducted in accordance with a special flight operations certificate — RPAS issued under section 903.03.

### Procedures

- **901.23 (1)** No pilot shall operate a remotely piloted aircraft system unless the following procedures are established:
  - **(a)** normal operating procedures, including pre-flight, take-off, launch, approach, landing and recovery procedures; and
  - **(b)** emergency procedures, including with respect to
    - **(i)** a control station failure,
    - **(ii)** an equipment failure,
    - **(iii)** a failure of the remotely piloted aircraft,
    - **(iv)** a loss of the command and control link,
    - **(v)** a fly-away, and
    - **(vi)** flight termination.
- **(2)** If the manufacturer of the remotely piloted aircraft system provides instructions with respect to the topics referred to in paragraphs (1)(a) and (b), the procedures established under subsection (1) shall reflect those instructions.
- **(3)** No pilot shall conduct the take-off or launch of a remotely piloted aircraft unless the procedures referred to in subsection (1) are reviewed before the flight by, and are immediately available to, each crew member.
- **(4)** No pilot shall operate a remotely piloted aircraft system unless the operation is conducted in accordance with the procedures referred to in subsection (1).

### Site Survey

**901.27** No pilot shall operate a remotely piloted aircraft system unless, before commencing operations, they determine that the site for take-off, launch, landing or recovery is suitable for the proposed operation by conducting a site survey that takes into account the following factors:

- **(a)** the boundaries of the area of operation;
- **(b)** the type of airspace and the applicable regulatory requirements;
- **(c)** the altitudes and routes to be used on the approach to and departure from the area of operation;
- **(d)** the proximity of manned aircraft operations;
- **(e)** the proximity of aerodromes, airports and heliports;
- **(f)** the location and height of obstacles, including wires, masts, buildings, cell phone towers and wind turbines;
- **(g)** the predominant weather and environmental conditions for the area of operation; and
- **(h)** the horizontal distances from persons not involved in the operation.

### Operations at or in the Vicinity of an Aerodrome, Airport or Heliport

- **901.47 (1)** No pilot shall operate a remotely piloted aircraft at or near an aerodrome that is listed in the *Canada Flight Supplement* or the *Water Aerodrome Supplement* in a manner that could interfere with an aircraft operating in the established traffic pattern.
- **(2)** Subject to section 901.73, no pilot shall operate a remotely piloted aircraft at a distance of less than
  - **(a)** three nautical miles from the centre of an airport; and
  - **(b)** one nautical mile from the centre of a heliport.
- **(3)** No pilot shall operate a remotely piloted aircraft at a distance of less than three nautical miles from the centre of an aerodrome operated under the authority of the Minister of National Defence unless the operation is conducted in accordance with a special flight operations certificate — RPAS issued under section 903.03.

### Records

- **901.48 (1)** Every owner of a remotely piloted aircraft system shall keep the following records:
  - **(a)** a record containing the names of the pilots and other crew members who are involved in each flight and, in respect of the system, the time of each flight or series of flights; and
  - **(b)** a record containing the particulars of any mandatory action and any other maintenance action, modification or repair performed on the system, including
    - **(i)** the names of the persons who performed them,
    - **(ii)** the dates they were undertaken,
    - **(iii)** in the case of a modification, the manufacturer, model and a description of the part or equipment installed to modify the system, and
    - **(iv)** if applicable, any instructions provided to complete the work.
- **(2)** Every owner of a remotely piloted aircraft system shall ensure that the records referred to in subsection (1) are made available to the Minister on request and are retained for a period of
  - **(a)** in the case of the records referred to in paragraph (1)(a), 12 months after the day on which they are created; and
  - **(b)** in the case of the records referred to in paragraph (1)(b), 24 months after the day on which they are created.
- **(3)** Every owner of a remotely piloted aircraft system who transfers ownership of the system to another person shall, at the time of transfer, also deliver to that person all of the records referred to in paragraph (1)(b).



ALBERTA

AERODROME/FACILITY DIRECTORY

STONY PLAIN (LICHTNER FARMS) AB

CSP3


REF	N53 32 15 W114 04 06 16°E (2012) UTC-7(6) Elev 2415' VTA A5015	
OPR	Frank J. Lichtner 780-968-7059/292-0990 Reg PPR	
FLT PLN	Edmonton 780-890-8386 or Edmonton 866-WXBRIEF (Toll free within Canada) or 866-541-4102 (Toll free within Canada & USA)	
FIC	Edmonton IFR 888-358-7526	
ACC		
RWY DATA	Rwy 06(065°)/24(245°) 2345x65 GRASS Rwy 06 up 1% first half	
RCR	Rwy strength and condition subject to seasonal and wx cond. Ltd win maint.	
PRO	For VFR Routes, Edmonton VTPC or as directed by ATC. Transponder required in Control Zone. Edmonton Intl Class C airspace 4600 ASL and above overlies A/D. TRANSPONDER MANDATORY - Acft operating in Edmonton Class C require a discrete transponder code which may be obtained by filing a flt pln or ctc 888-358-7526 at least 30 min prior to entering.	
CAUTION	Trees and powerline 150' west of threshold Rwy 06. Wildlife in vicinity of rwy. Rwy on ridge, steep drop off both sides and ends of rwy. Strong crosswinds may be encountered.	

ALBERTA

AERODROME/FACILITY DIRECTORY

STONY PLAIN (WESTVIEW HEALTH CENTRE) AB (Heli)

CSP2

REF	N53 32 17 W113 58 42 15°E (2014) UTC-7(6) Elev 2311' VTA A5015	
OPR	Capital Health Authority 780-968-3600 Cert PPR	
PF	A-1,2,3,4 C-5 D-6	
FLT PLN	Edmonton 780-890-8386 or Edmonton 866-WXBRIEF (Toll free within Canada) or 866-541-4102 (Toll free within Canada & USA) Edmonton IFR 888-358-7526	
FIC		
ACC		
HELI DATA	FATO 85' dia ASPH TLOF 64' dia ASPH Safety Area 114' dia	
LIGHTING	RY(LO)RR PN ctc Opr	
COMM	tfc 123.2 5NM 5400 ASL	
ATF		
PRO	Arr/dep 121° & 323° fr heli. Routing via Edmonton VTTC or as directed by ATC.	

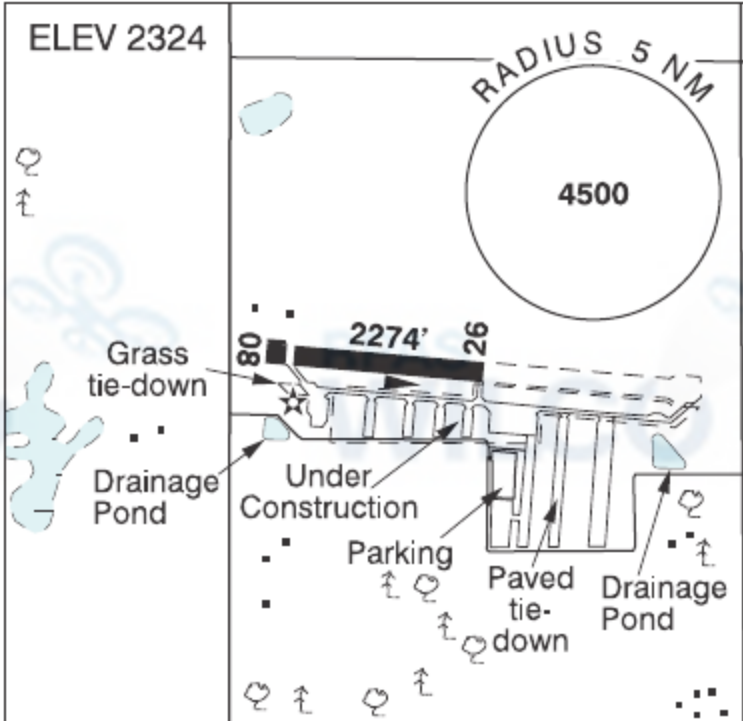


ALBERTA

AERODROME/FACILITY DIRECTORY

EDMONTON / PARKLAND AB

CPL6

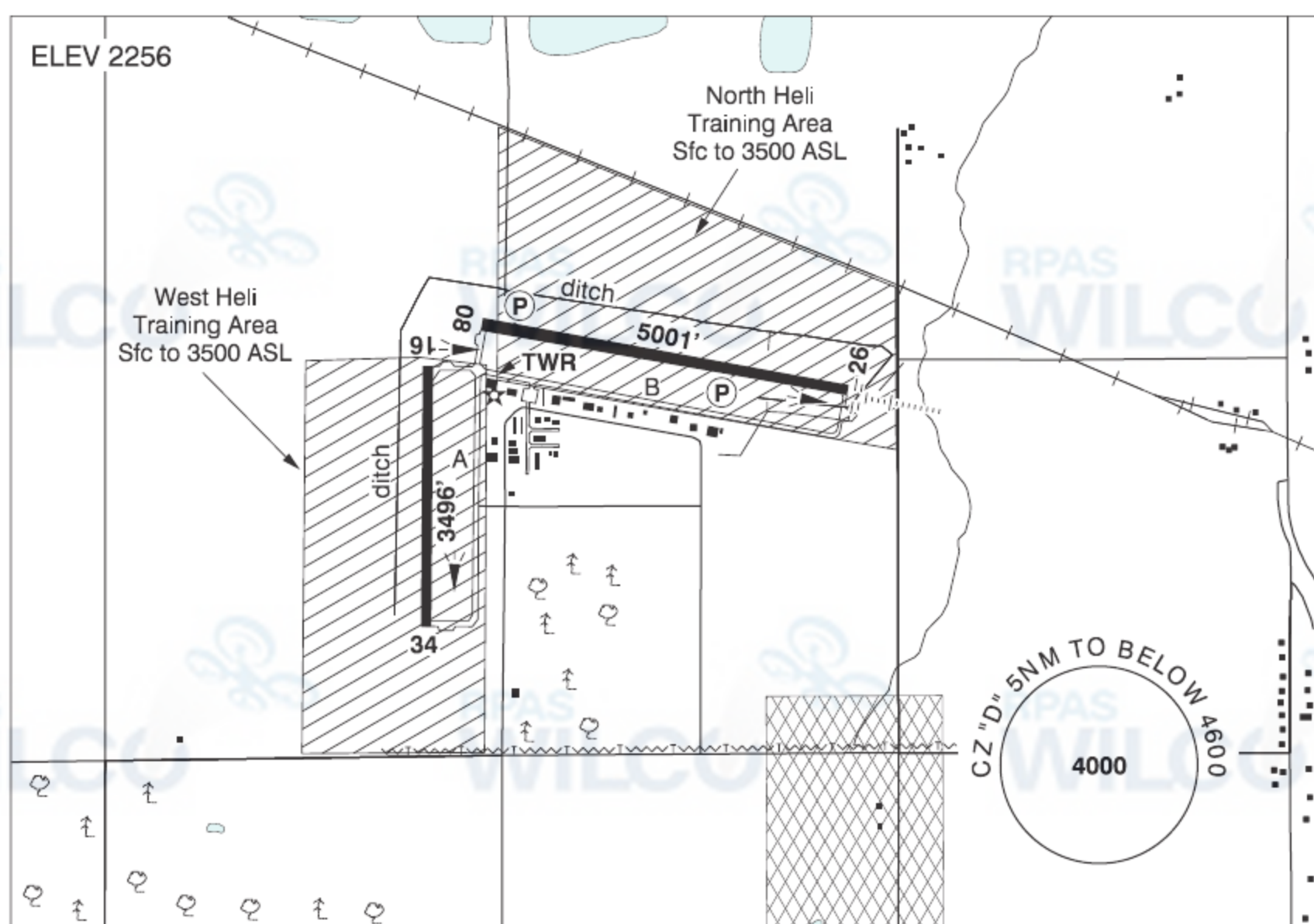
REF	N53 28 28 W113 49 46 5W 15°E (2014) UTC-7(6) Elev 2324' VTA A5015	<div>ELEV 2324</div> <div></div>
OPR	Parkland Airport Development Corp. 780-665-8119 Reg PN	
PF	D-1,2,3,4,5,6	
FLT PLN	Edmonton 780-890-8386 or Edmonton 866-WXBRIEF (Toll free within Canada) or 866-541-4102 (Toll free within Canada & USA) Edmonton IFR 888-358-7526	
FIC		
ACC		
SERVICES		
FUEL	100LL, JA	
RWY DATA	Rwy 08(080°)/26(260°) 2274x100 ASPH Thld 08 displ 209'. RESA: 26 295'	
RCR	Opr Ltd win maint.	
COMM		
MF	tfc 122.7 (no ground station) 4NM 3400 ASL (CAR 602.98)	
PRO	Edmonton Intl Class C airspace 3400 ASL and above overlies A/D outside of designated area surrounding aerodrome. TRANSPONDER MANDATORY - Acft operating in Edmonton Class C require a discrete transponder code which may be obtained by filing a flt pln or ctc 888-358-7526 at least 30 min prior to entering. Air traffic advsy freq 123.2 Edmonton City Area in Class G and E airspace. Circuit alt 3300 ASL. Rgt hand circuits Rwy 26 (CAR 602.96) <b>Entering/Leaving Circuit:</b> Acft entering or leaving the circuit, abv 3300 ASL, shall remain: - West of Hwy 60 - North of Garden Valley Rd (Hwy 627) - South of Hwy 628 <b>IFR Departures:</b> Due to overlying IFR apch and dep procedures; IFR clnc not avbl on the ground. Airborne acft should expect delays in the receipt of an IFR clnc. To expedite the issuing of an IFR clnc once airborne, the following procedures are suggested: - Prior to dep: call 1-888-FLT-PLAN for discrete transponder code (this is not an ATC clnc) - When airborne: proceed westbound, remain VFR, clear of Class C airspace, and ctc Edmonton Tml 119.5	

## ALBERTA

## AERODROME/FACILITY DIRECTORY

## EDMONTON / VILLENEUVE AB

CZVL



<b>REF</b>	N53 40 06 W113 51 08 1W 14°E (2020) UTC-7(6) Elev 2256' VTA A5015 LO1 LO2 HI3 T1 CAP
<b>OPR</b>	Edmonton Regional Airports Authority 780-890-8327 H24 Cert
<b>PF</b>	A-1 avbl 1430-2300Z± D-2,3,4,5,6
<b>CUST</b>	AOE/15 (Cost Recovery) 888-226-7277 14-22Z±
<b>FLT PLN</b>	<div><b>FIC</b> Edmonton 780-890-8386 or Edmonton 866-WXBRIEF (Toll free within Canada) or 866-541-4102 (Toll free within Canada &amp; USA)</div> <div><b>ACC</b> Edmonton IFR 888-358-7526</div> <div><b>WX</b> METAR AUTO H24 (see COMM) TAF H24, issue times: 00, 06, 12, 18Z WxCam</div>
<b>SERVICES</b>	<div><b>FUEL</b> 100LL, JA-1 (FSII avbl), SP Villeneuve Aviation Centre Inc. 780-460-0470 Mon-Fri 14-01Z±, Sat 15-23Z±, Sun 17-21Z± O/T call out chgs apply. Fuel truck avbl. Automated credit card processing cardlock. Cardinal Aviation Centre FBO 780-459-0952/780-446-5949 Mon-Sat 15-23Z± Sun 20-23Z± O/T 780-446-5949. HQ Fuels Ltd. Automated credit card processing. Fuel truck avbl 888-451-4621</div> <div><b>OIL</b> All</div> <div><b>S</b> 1,2,3,4,5,6</div>



ALBERTA

AERODROME/FACILITY DIRECTORY

EDMONTON / VILLENEUVE AB (Cont'd)

CZVL

RWY DATA	Rwy 08(086°)/26(266°) 5001x100 ASPH Rwy 08 down 0.42% Rwy 16(166°)/34(346°) 3496x100 ASPH RESA: 08/26 295'
RWY CERT	Rwy 08/26 AGN IIIB Rwy 16/34 AGN II
TWY CERT	Twy: A,B AGN II
APRON	Apron II PPR fr tenant or opr for access. Bcst intentions on 123.45. Apron II rstd to acft with wingspans less than 59.1'.
RCR	Opr Ltd hrs, 3 hrs PN. Call out fee may be levied. CRFI, PLR/PCN.
LIGHTING	08-(TE HI) P2, 26-AN(TE HI) P2, 16-(TE ME), 34-(TE ME) ARCAL-118.8 type K
COMM	ATIS 128.35 15-04Z† GND Villeneuve 120.8 15-04Z† TWR Villeneuve 118.8 (V) 15-04Z† (emerg only 780-458-5828) ATF tfc 118.8 04-15Z† 5NM to below 4600 ASL ARR Edmonton Tml 119.5 DEP Edmonton Tml 119.5 VFR ADV Edmonton Tml 127.4 in Class C AWOS 128.35 04-15Z†
NAV	DME IVL 111.95 Ch 56(Y) N53 40 23 W113 50 36 (2251') ILS IVL 111.95 (Rwy 26) RVR LOC reliable only within 10° either side of centreline.
PRO	Rgt hand circuits Rwy 16 & 26 (CAR 602.96). Pilots to close VFR flt plans with Edmonton FIC (phone) when practicable or request closure fr ATC. For VFR routes see Edmonton VTPC or as directed by ATC. Edmonton Class C Airspace overlies CZ. TRANSPONDER MANDATORY - Acft operating in Edmonton Class C require a discrete transponder code which may be obtained by filing a flt plan or ctc 888-358-7526 at least 30 min prior to entering. IFR Training Restriction: PPR for IFR tng flights. Ctc ATC 888-358-7526 no more than 24 hrs prior to ETD. <b>HELI OPS:</b> Use Heli Training Area "NORTH" or "WEST" sfc to 3500 ASL. Remain North of Taxiway Bravo while using North Heli training area. Remain West of Taxiway Alpha while using West Heli training area.
CAUTION	Deer in vic of rwys. Aerobatics may be in progress over aprt 5800 ASL & below. Rising terrain immediately S of thld Rwy 34. Avoid flt over noise sensitive areas.

ALBERTA

AERODROME/FACILITY DIRECTORY

EDMONTON / VILLENEUVE (ROSE FIELD) AB CRF3

REF	N53 38 44 W113 48 10 2SE 15°E (2012) UTC-7(6) Elev 2190' VTA A5015	
OPR	Simon A. Rose 587-879-3242 Reg PPR	
FLT PLN		
FIC	Edmonton 866-WXBRIEF (Toll free within Canada) or 866-541-4102 (Toll free within Canada & USA)	
ACC	Edmonton IFR 888-358-7526	
RWY DATA	Rwy 07(072°)/25(252°) 2400X60 GRASS	
RCR	Opr No wint maint Conditions subject to seasonal and/or climatic variations. Soft in spring.	
COMM		
MF	Villeneuve Tower 118.8 (V) 15-04Z† (emerg only 780-458-5828)	
ATF	tfc 118.8 04-15Z† 5NM centred on Villeneuve A/D to below 4600 ASL	
PRO	Ctc Villeneuve Twr 118.8 5 miles and prior to tkof No tng flts or apchs.	
CAUTION	Watch for tfc on hwy 44 when landing Rwy 07 and dep Rwy 25. Note: Airport close to Edmonton/Villeneuve CZVL with similar rwy designations.	